



GO-GRASS White Paper: Policy horizons: “Bioeconomy, agri-economy the pathway of grassland opportunities and rural revitalization”” – Focus on forward-looking strategies and best practices

Grundmann, P., Mosquera-Losada, M. R., Adamseged, M.E., Álvarez-López, V.,
Ambye-Jensen, M., Thorsted Hamann, K., BARGUES, N., Bianca Socaciu, C.B.,
Bundgaard-Jørgensen, U., Ding, Z., Etxaleku, N., Germer, S., Heinrich, T., Hiemstra,
G., Hoffmann, T., Hunkin, S., Jørgensen, U., Mosteyrin Perdiguero, V., Orozco, R.,
Park, H., Paulrud, S., Paulusz, A., Råberg, T., van der Weide, R., Wevers, K.

Presenter: María Rosa Mosquera Losada

**GO-GRASS Final Event 2024
12. March 2024**



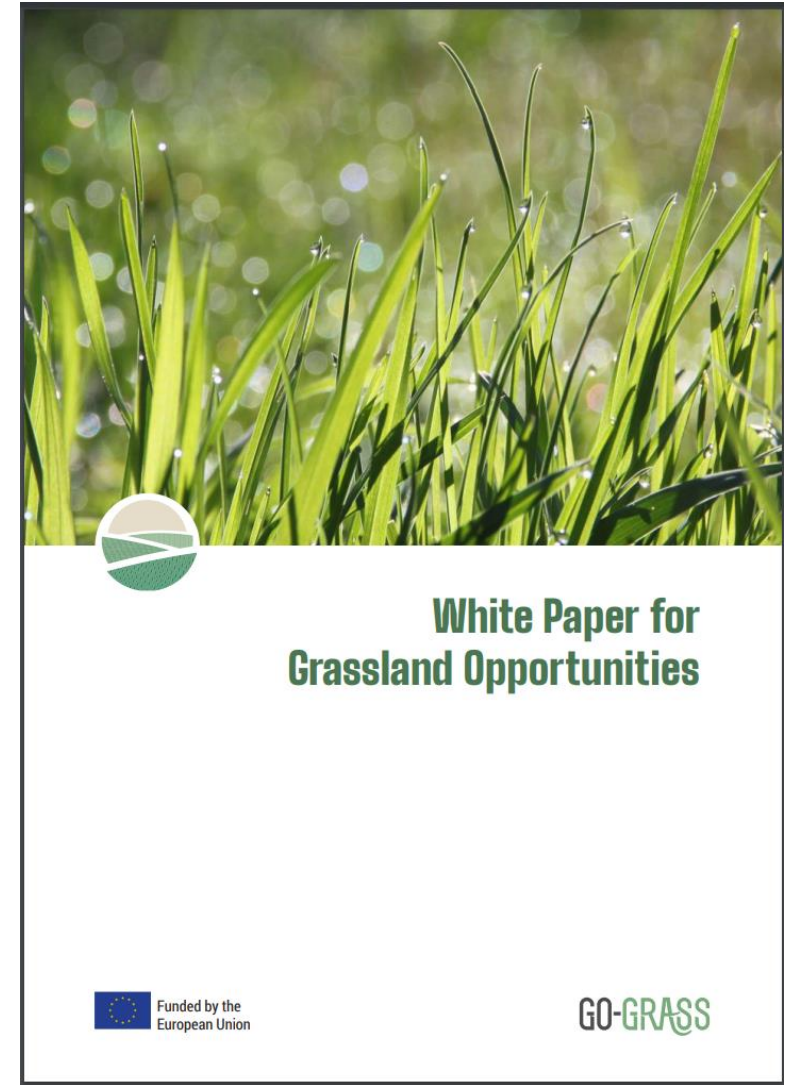
This project has received funding from the European Union’s Horizon 2020
research and Innovation programme under grant agreement N°862674.





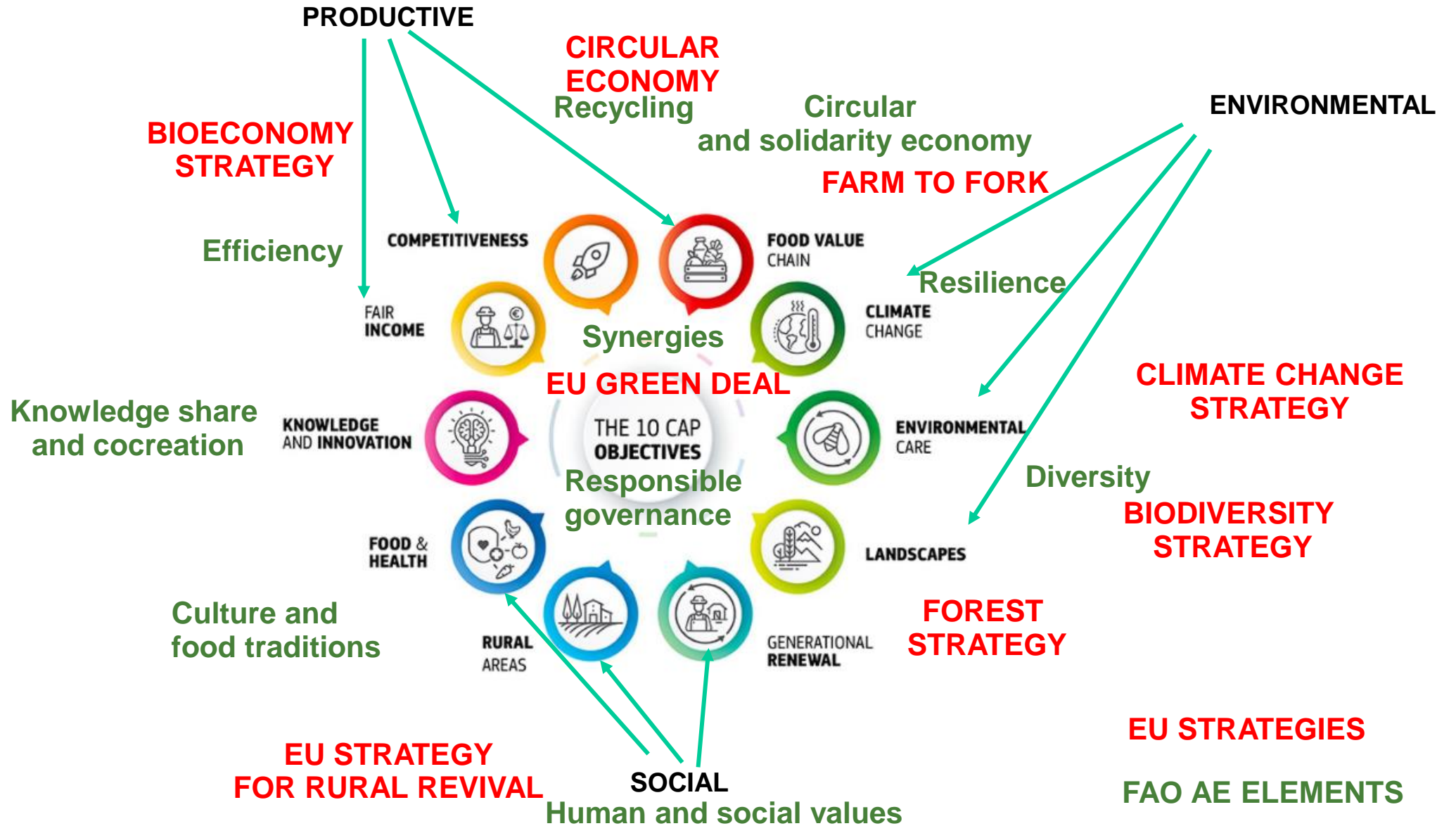
GO-GRASS White Paper

GO-GRASS





Agroecology principles: grasslands and business models promotion



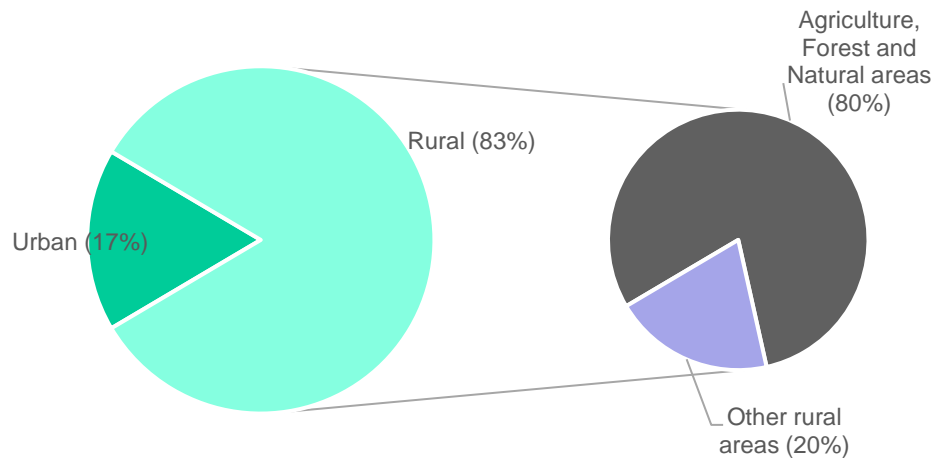


EU RURAL AREAS

Rural areas represents 83 % of Europe

80% of rural areas are agriculture, forest and natural areas

EU Urban and Rural Areas Distribution



20 million ha have a high or very high risk of being abandoned by 2030

70% in arable
20% grasslands

> 60% farmers are 55 years old or over while <11% are Young

CONCERNS

- * Land degradation
- * Biodiversity losses
- * Food and water security diminishment
- * Less resilient rural areas to market climate change



ADEQUATE BUSINESS MODELS





GO-GRASS Demonstration Cases

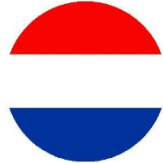
GO-GRASS



Biochar



Carbonisation of late-harvest grassland cuttings



Paper & Packaging



Fiber extraction from roadside and nature conservation grasses



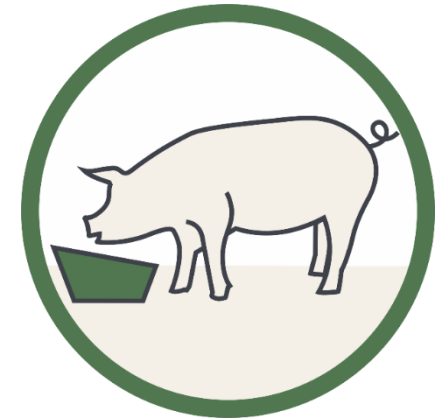
Bedding Material



Briquetting of Reed Canary Grass



Organic Protein



Farm-scale green biorefinery from fresh grass





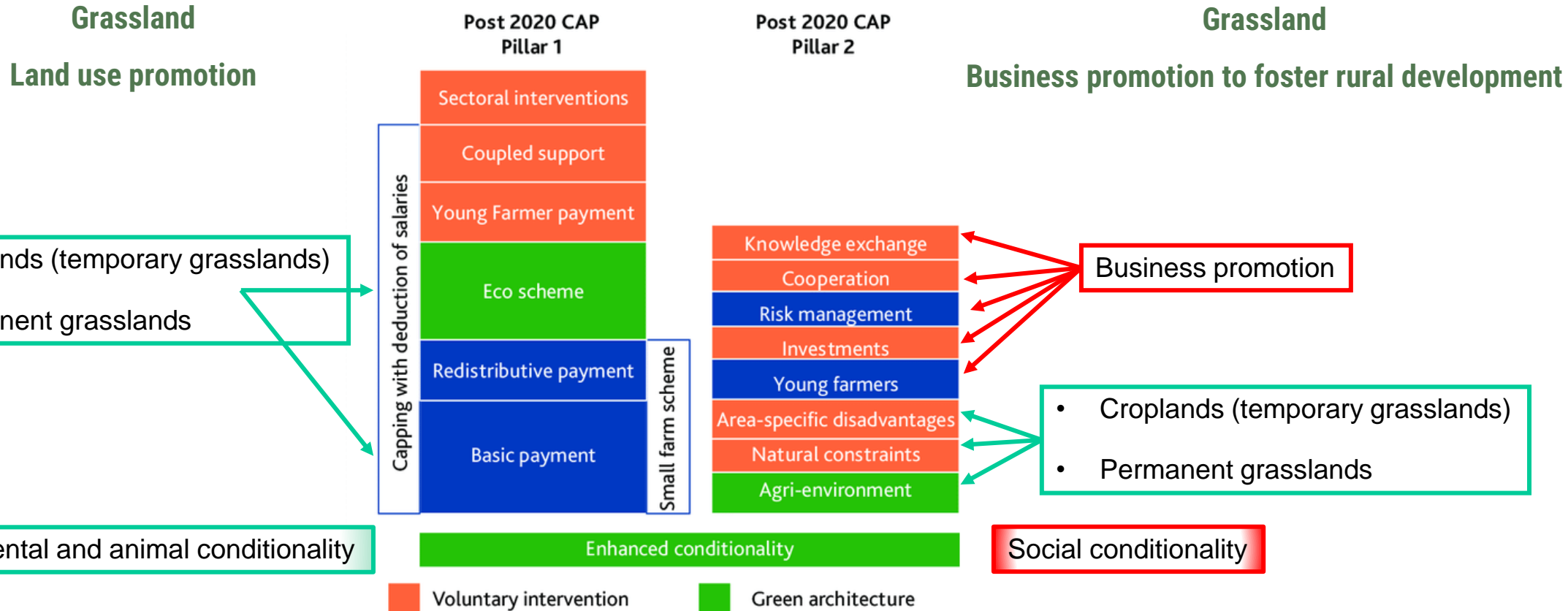
GO-GRASS Demonstration Cases Sustainability assessment

- **Economically feasible and viable** if initial investments are provided and considering increasing energy prices
- **Environmentally sound:**
 - Reduces carbon footprint to deliver products (i.e. soja imports reduction in the Denmark demo case)
 - Increases and maintains biodiversity if permanent grassland is the raw material
- **Socially acceptable**
 - Increases high quality Jobs
 - Increases business opportunities for women and youth



CAP SUPPORTING SUSTAINABLE BUSINESS MODELS

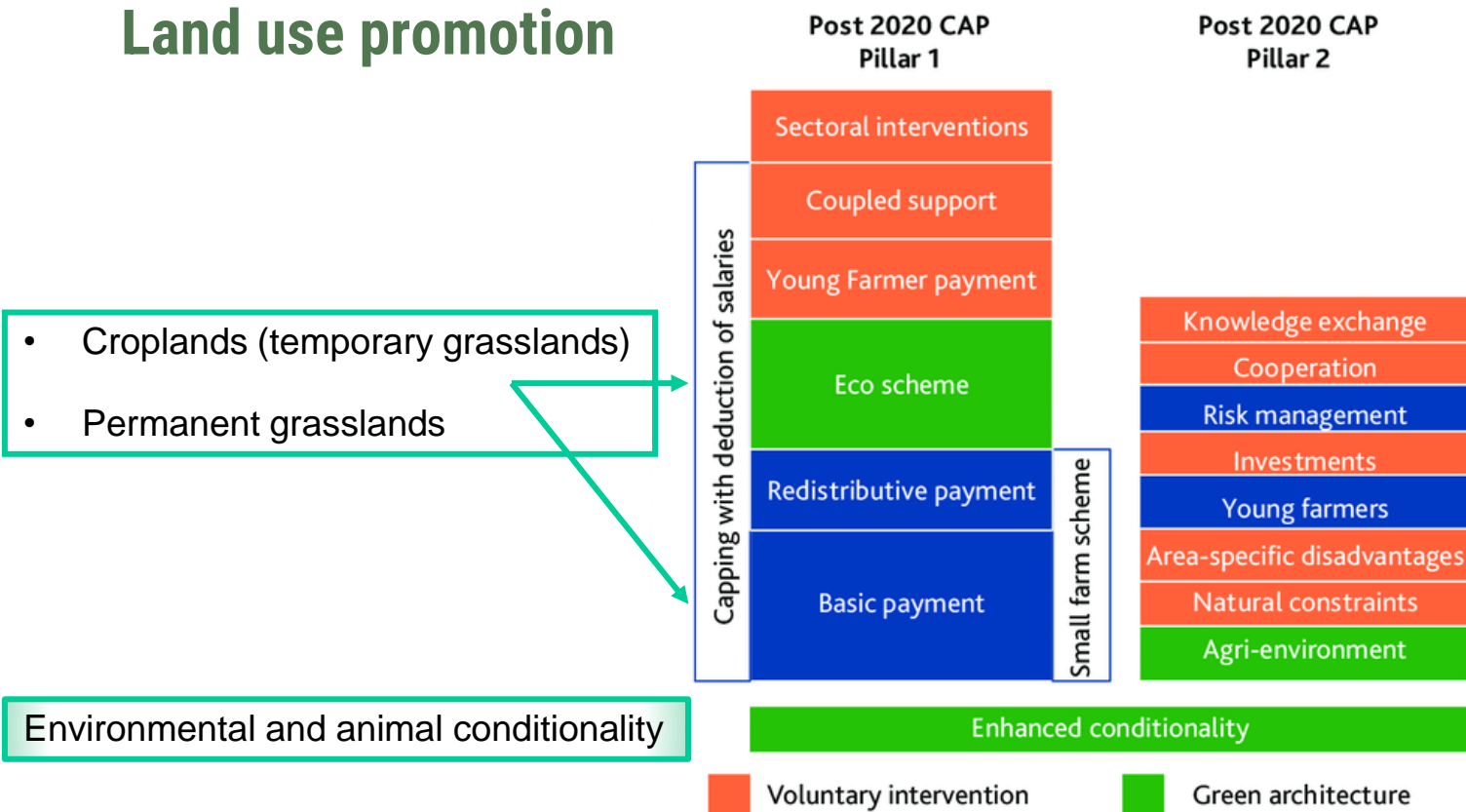
WHY? Because is the main driver of agriculture in Europe (40% of EU budget)





CAP SUPPORTING SUSTAINABLE BUSINESS MODELS

Land use promotion

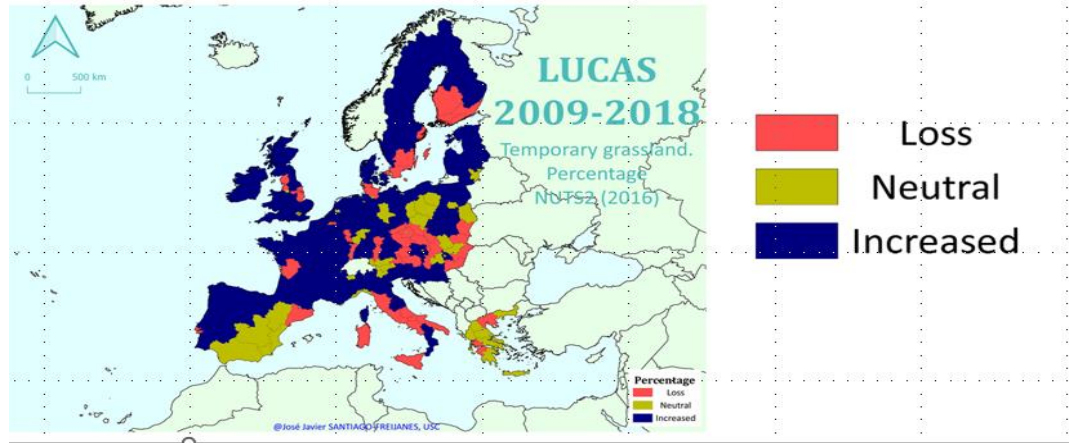


Policy impact monitoring

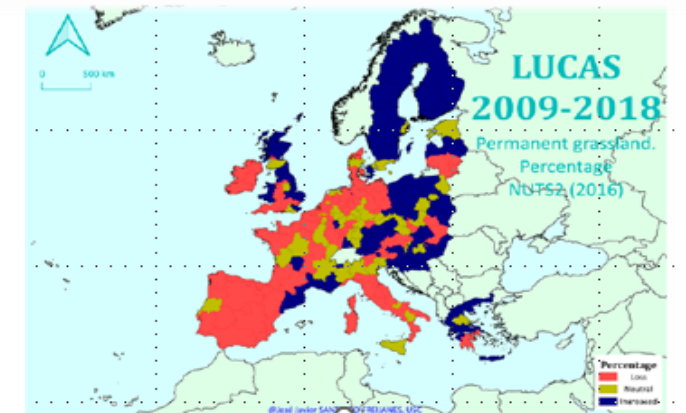


GO-GRASS

Evolution of temporary Grassland (LUCAS) (Neutral means from -2.5 to 2.5)



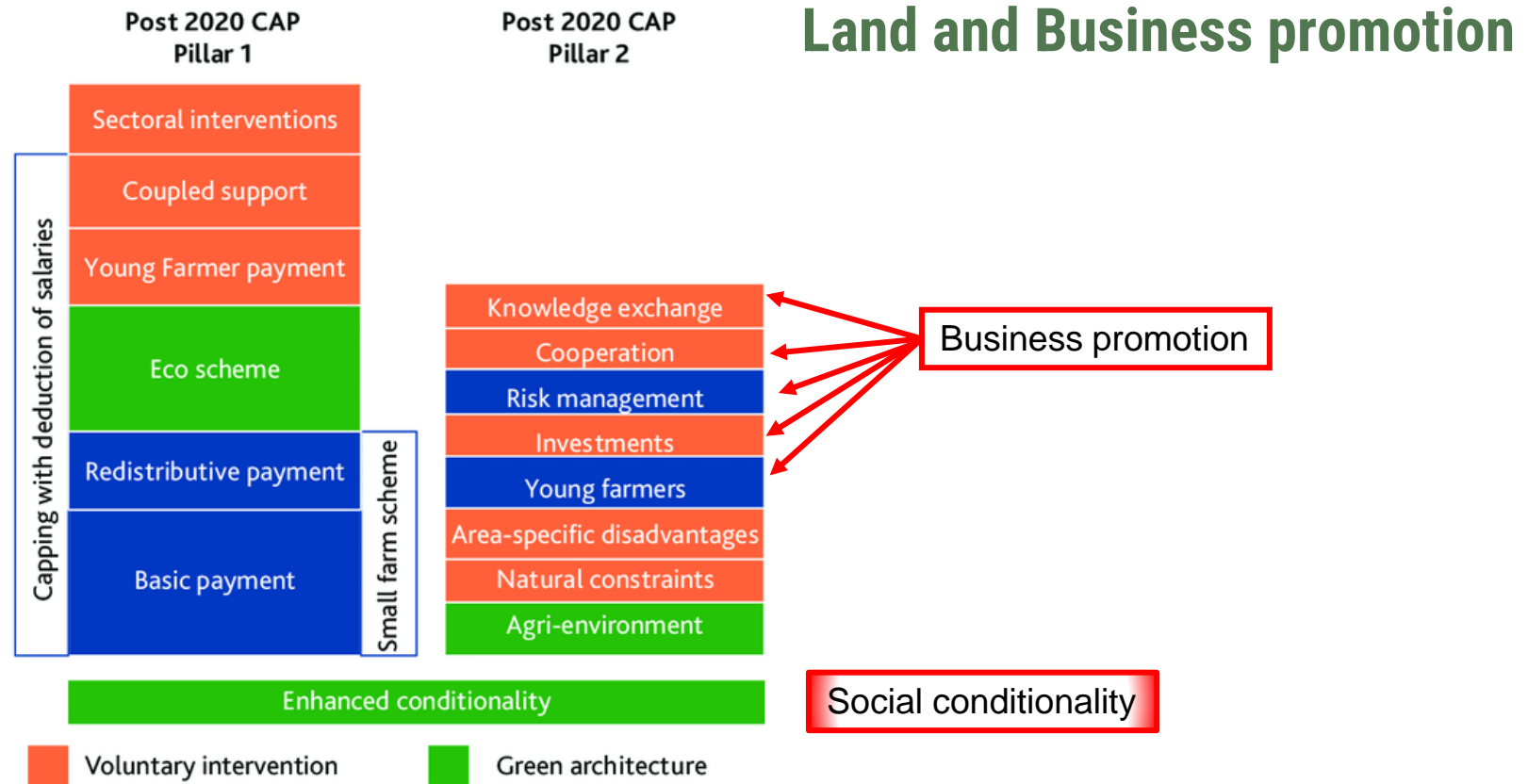
Evolution of temporary Grassland (LUCAS) (Neutral means from -2.5 to 2.5)





CAP SUPPORTING SUSTAINABLE BUSINESS MODELS

GO-GRASS

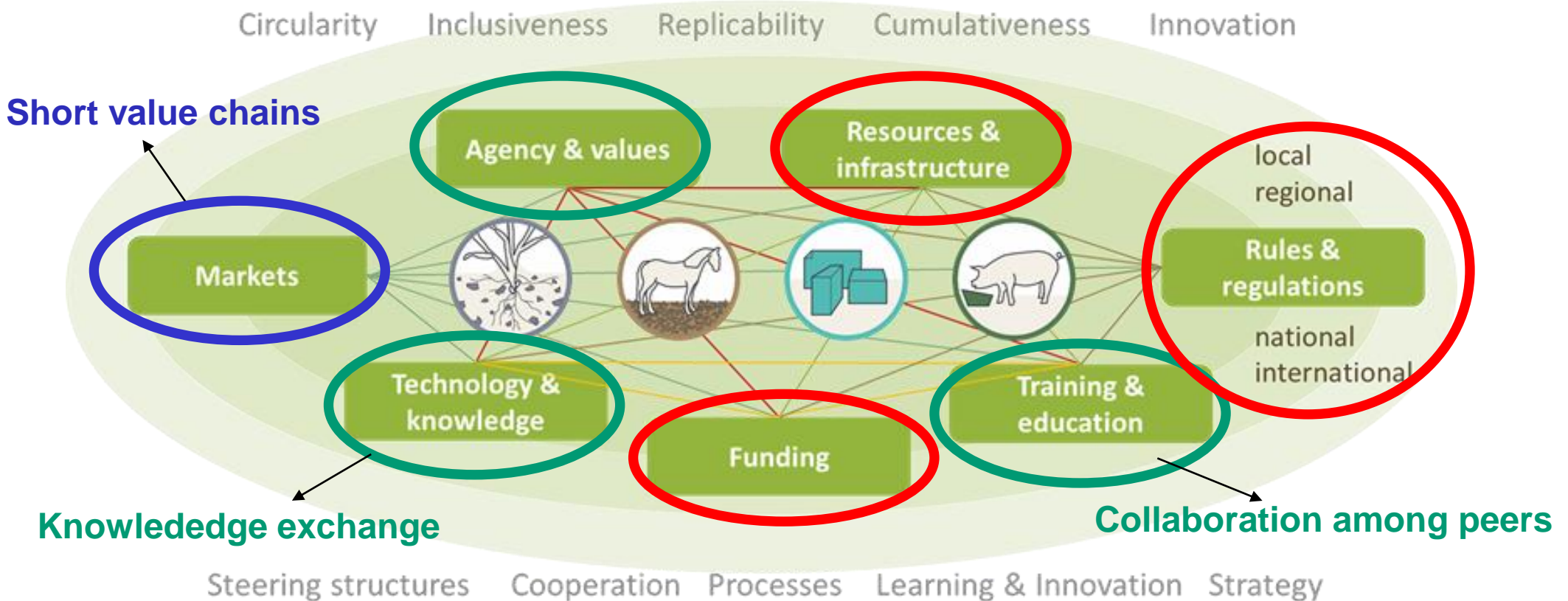




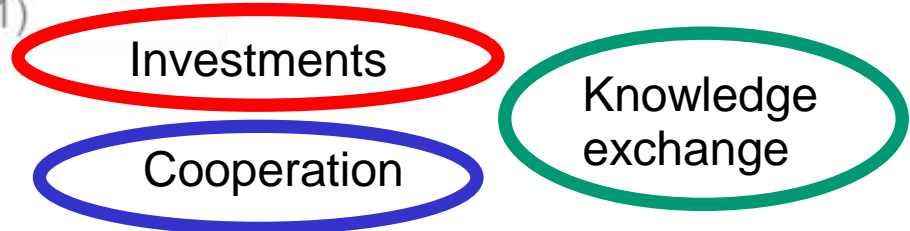
Business Environment Development



GO-GRASS



Adamseged and Grundmann (2021)





EU Policy recommendations for grass-based business models

Holistic Land use

- * Support conversion of land into grassland including marginal lands and maintain the existing grasslands
- * CAP basic payments to new bioeconomy and grassland-based products (eg. biochar) for the CAP Annex 1

Farm land use integration

- Increasing the permanent grasslands farm share to deliver new sustainable grassland based products
- Promote opportunities for farm crop but also for business models diversification at farm level

Environment

- Link sustainable production with ecosystem services valorization with product sustainability indicators:
 - Carbon footprint acknowledging the grassland carbon sequestration
 - Permanent grassland share of the product raw material to prioritize biomass supply to biorefineries





EU Policy recommendations for grass-based business models

GO-GRASS

Supportive policies

- * Favour grassland-based local-adapted agrifood system policy coordination at all levels (EU, National, Regional and Local) avoiding contradictions and facilitating the regulatory and funding push effect by supporting:
 - * Small/medium scale circular businesses establishment integrating value chain and carbon farming
 - * Business cooperation among all actors within the value chain
 - * The inclusion of new products in Annex 1 of the CAP and the deployment of certain products (i.e. biochar in national regulations deployment of the EU Regulation 2019/1009) in the EU regulations
 - * Advisory services to enhance new sustainable business uptake through capacity building (i.e. LLs)
 - * Monitoring systems to identify the impact of policies considering the trade-offs in ecosystem services

Citizens

- * Increase consumer awareness of grasslands multifunctionality by massive communication





GO-GRASS

Follow our journey!



@gograssEU



GO-GRASS



go-grass.eu

Contact:



pgrundmann@atb-potsdam.de

go-grass@atb-potsdam.de

