

GO-GRASS

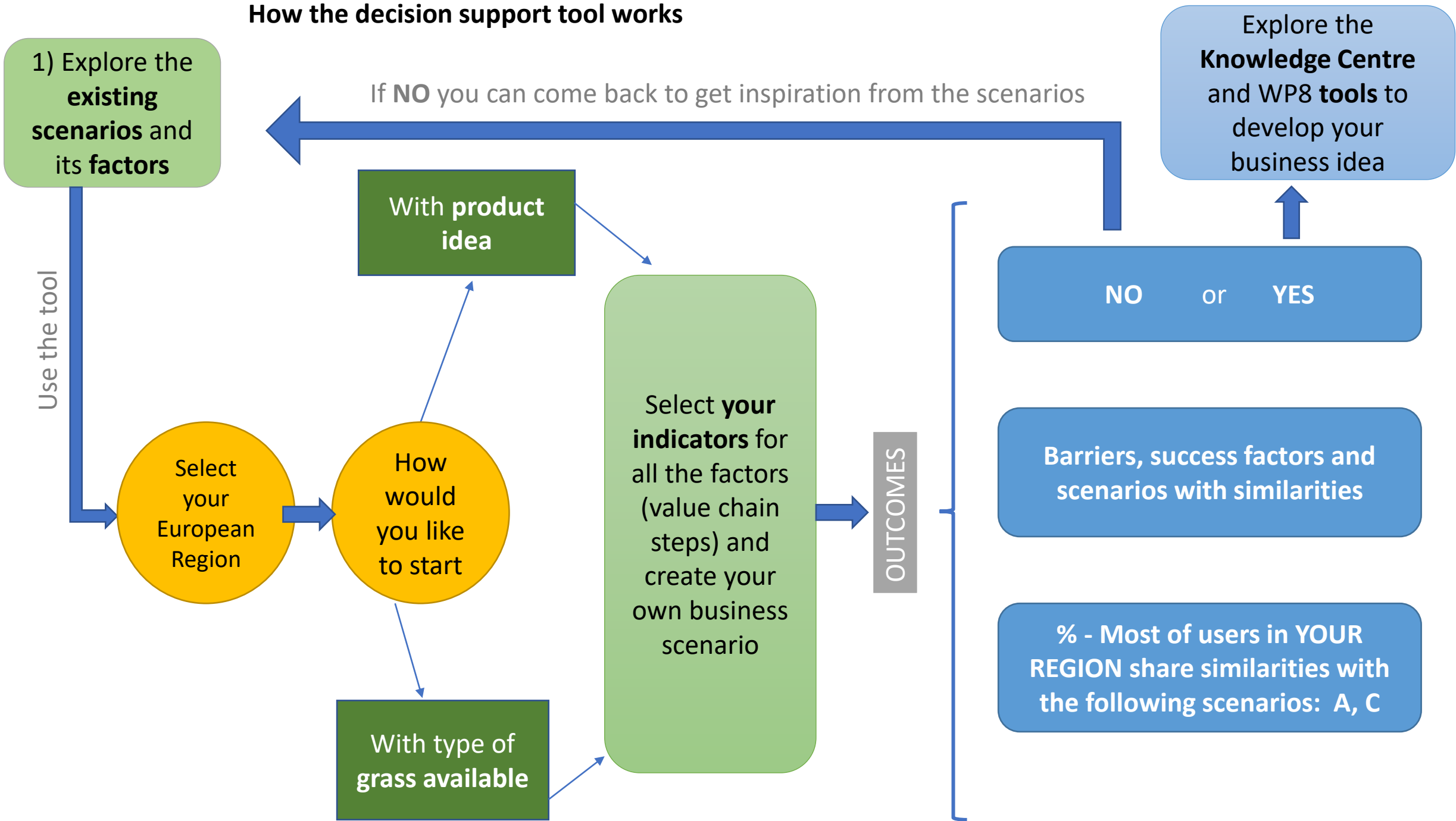
Online decision support tool for
flexible integration of value chain
components

Annex of Terms of reference – March 2023

Tool functionalities

1. The users can explore the value chains of existing scenarios (for now 4 DEMOS and later scenarios to come in D6.3).
2. The tool is able to advice if the business idea **is good or not** depending on the indicators selected by the user.
3. The tool presents the barriers and the success factors of the user's scenario and shows the existing scenarios that present similarities.
4. The tool leads the user to check the Knowledge Centre.

How the decision support tool works



Guidelines/Instructions

- How to use the tool
- Benefits and outcomes
- Definitions:
 - Value chain
 - Scenario
 - Business Model

Choose a scenario



Animal bedding
in Sweden



Biochar
in Germany



Paper & packaging
in the Netherlands



Organic protein
in Denmark



Animal bedding
in Sweden

PROCESS:

Grass briquetting

TYPE OF GRASS:

Reed Canary Grass

PRODUCTS:

Animal bedding, biogas



Biochar
in Germany

TYPE OF GRASS:

Wetland grasses

PROCESS:

Pyrolysis,

PRODUCTS:
Biochar



Organic protein
in Denmark

TYPE OF GRASS:

Grassland from nitrate sensitive
areas and peatlands

PROCESS:

Small-scale biorefining
technology

PRODUCTS:

Organic protein concentrate,
renewable energy, nutrients



Paper & packaging
in the Netherlands

TYPE OF GRASS:

Nature and roadside grasses

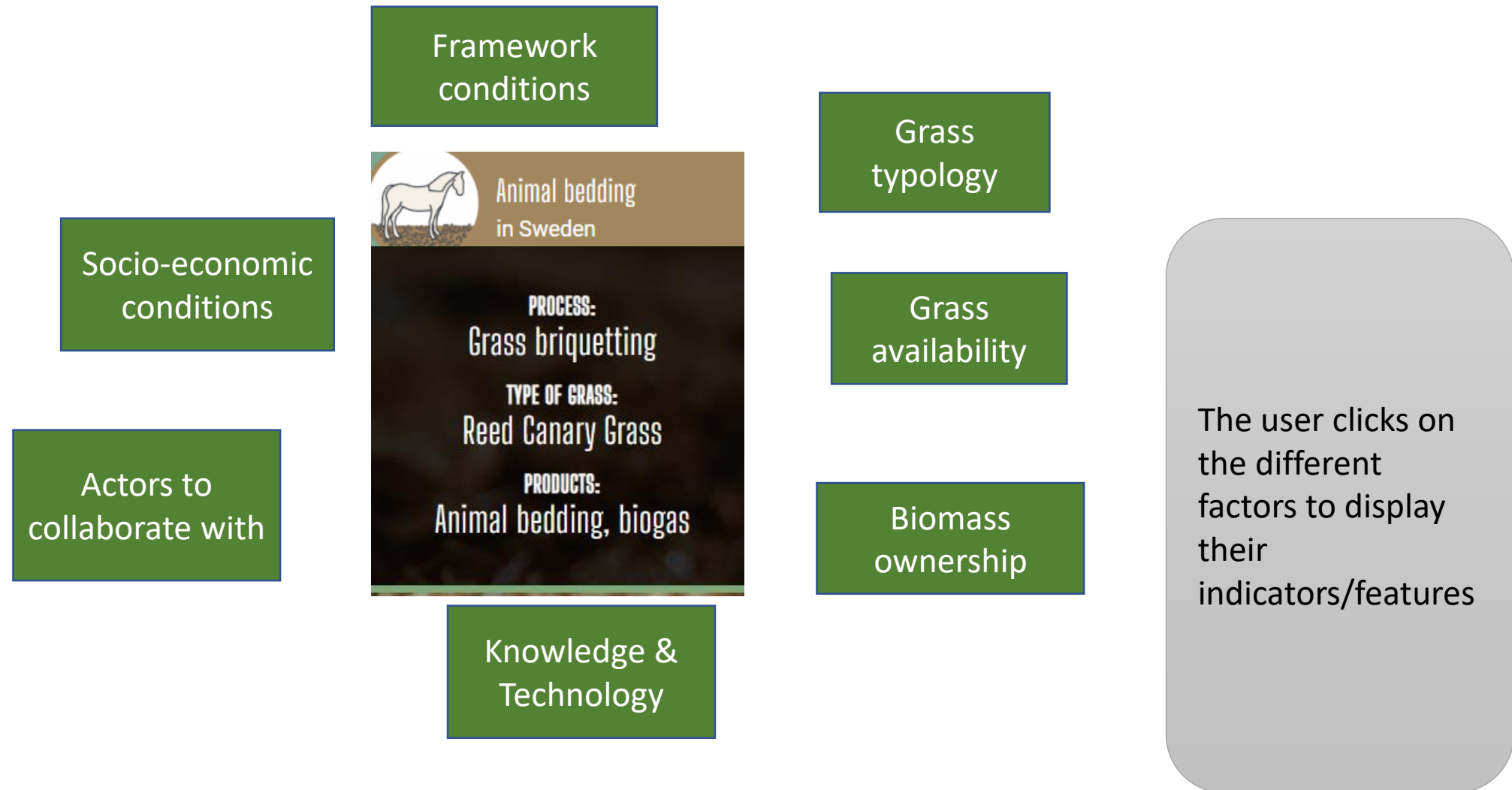
PROCESS:

Pre-treatment, digester and
fermentation technologies

PRODUCTS:

Packaging and high-quality paper


Explore the factors (value chain components and framework conditions) of the chosen scenario



Explore the factors (value chain components and framework conditions) of the chosen scenario



Dry Grass
Brief explanation/description
(image//Video)



Grass
typology

Grass
availability

Biomass
ownership

When the user clicks on any of the factors a Window pops out with some useful information and visual material (pictures, videos, infographics) describing the factor and giving its features/indicators

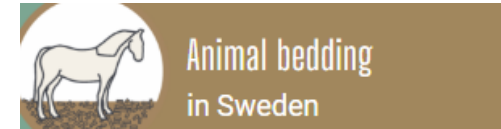

Create your
own scenario

Choose
another
scenario



Explore the factors (value chain components and framework conditions) of this scenario

Seasonal
Brief explanation/description
(image//Video)



Grass typology

Grass availability

Biomass ownership

BEDDING

gas

ng
y

When the user clicks on any of the factors a Window pops out with some useful information and visual material (pictures, videos, infographics) describing the factor and giving its features/indicators

After exploring the Scenario the user can choose their own indicators to develop their own scenario

Choose another scenario



Create your own scenario



How would you like to start?

The user chooses first how they want to start using the tool

With the product I want to develop

With the kind of grass I have available

Choose your product

Biogas

Biochar

Paper and
Packaging

Proteins

Animal Bedding

Other

OR

Choose your Type of grass

Dry grass

Cultivated grass

Grass from
wetlands

There can be images
instead of text

Here the user needs to choose their own factor features

Grass Typology

Dry grass

Cultivated grass

Grass from wetlands

Drag and drop the indicators of your scenario

When the user clicks on any of the tabs/factors at the top, a list with indicators gets displayed. These features can be dragged and dropped to the items list of the user's scenario

Indicators/features I can identify in my own scenario

Dry grass

Here the user needs to choose their own factor features

Grass
Availability

A lot

Limited

Seasonal

In many
locations

Drag and drop the indicators of your
scenario

When the user clicks on any of the tabs/factors at the top, a list with indicators gets displayed. These features can be dragged and dropped to the items list of the user's scenario

Indicators/features I can identify in my own
scenario

Dry grass

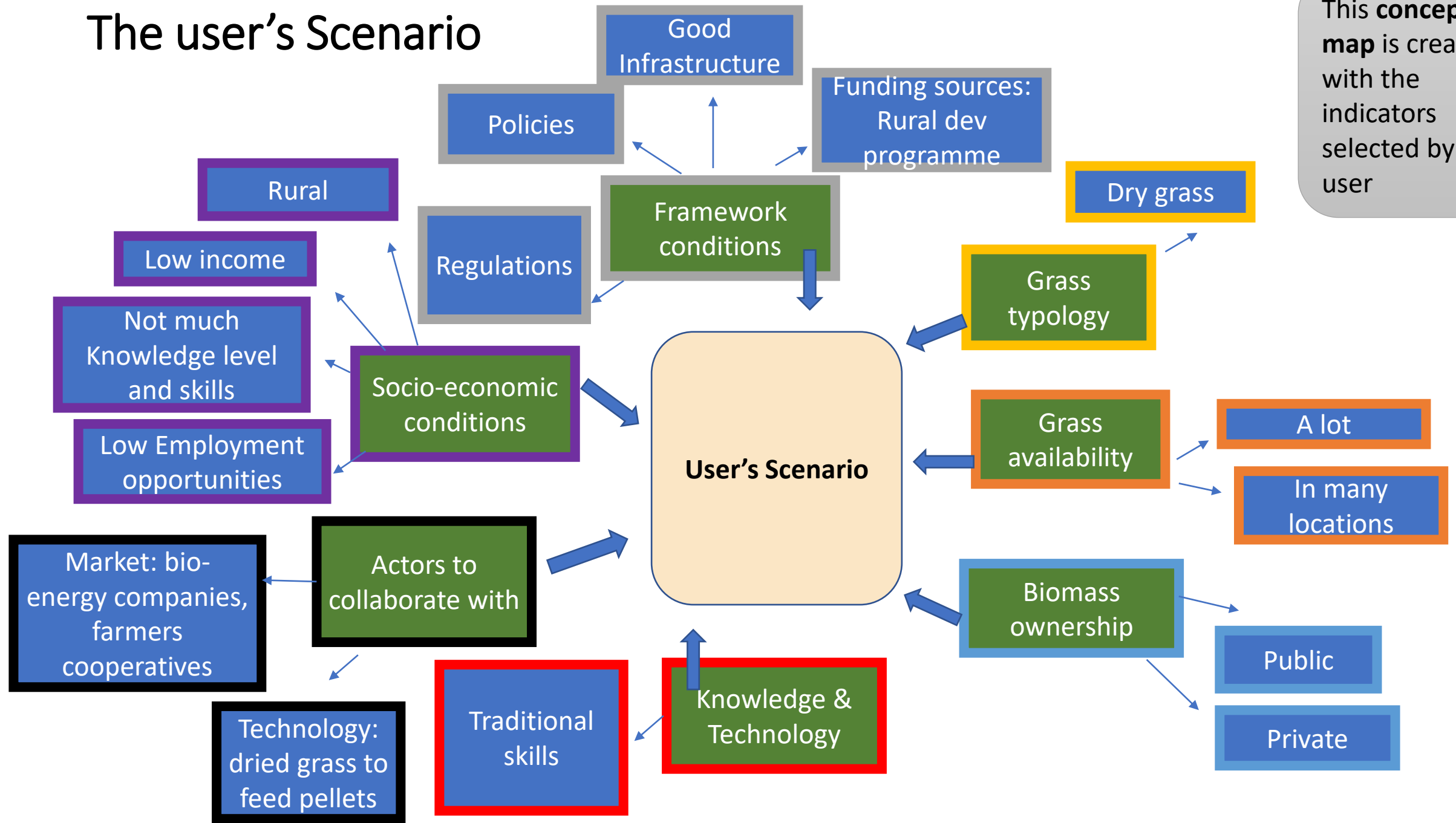
A lot

In many
locations



The user's Scenario

This **concept map** is created with the indicators selected by the user



Outcome 1 – Go or not to go

- The tool is able to advice if the business idea **is good or not** depending on the indicators selected by the user
- The value of each indicator is weighted depending on the importance of its contribution to the Business idea
- If the idea is suitable the tool suggests to visit the tools from WP8 to refine the business model, if NOT it suggests to start again or go to the resources/scenarios of the project to get inspiration

Outcome 2 – Barriers and success factors

- The tool presents the barriers and the success factors of the user's scenario.
- Considering the indicators selected by the user, the tool provides the success factors that might be missing, and conclusions and recommendations (it interprets the concept map) e.g.:
 - *Grass typology suitable for processing, energy pellets is a good choice.*
 - *Collaborate with public and private landowners for access to biomass.*
 - *Collaborate with bioenergy companies for processing of the grass.*
 - *Sell the grass-energy product in the local area.*
 - *Logistics from harvest to energy companies is challenging due to long distances.*
- The tool suggests the user to visit other sections of the website where they can find useful information, videos, sources and inspiration (Knowledge Centre).
- The tool provides statistics such as: ***“70% of users in Central Eastern Europe have similarities with scenario A”.***

Knowledge Centre

- Stakeholders' map and maps on grass/livestock/socio-economy contexts (based on the [current webpage](#))
- Videos
- Factsheets and infographics describing the DEMOS and the additional scenarios assessed in the D6.3 report
- Training Tools (link to the [training webpage](#))
- Useful links and databases (policies, bioeconomy funding, etc.)