

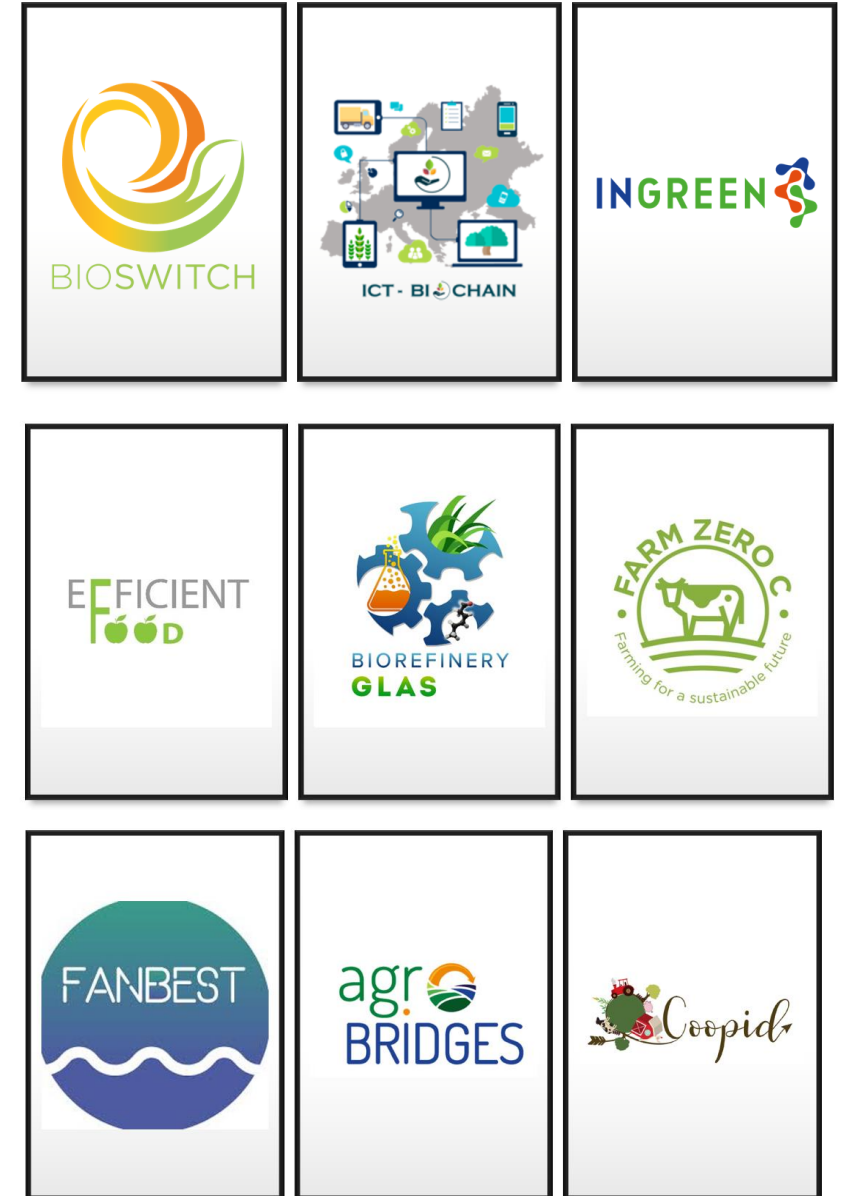


Circular Bioeconomy Research Group



- ITT Third Level Institution established 1977
- In 2021 ITT will merge into Munster Technological University
- 22,000 students, 2,000 staff
- 6 Campuses
- 6 Research Centres
- CircBio was established in 2019
- CircBio is based at Shannon Applied Biotech Centre, and part of BiOrbic Bioeconomy Centre

MTU MUNSTER
TECHNOLOGICAL
UNIVERSITY



PGdipBIOECONOMY
with BUSINESS



Partners



Funding Agencies



The European Agricultural Fund for Rural Development: Europe investing in rural areas



Biorefinery Glas is a European Innovation Partnership (EIP) funded by the Department of Agriculture, Food, and the Marine (DAFM) under the Rural Development Programme 2014-2020

For further information please contact:

-  www.biorefineryglas.eu
-  [@biorefineryglas](https://twitter.com/biorefineryglas)
-  [@biorefineryglas](https://facebook.com/biorefineryglas)
-  [company/biorefineryglas](https://company.linkedin.com/biorefineryglas)

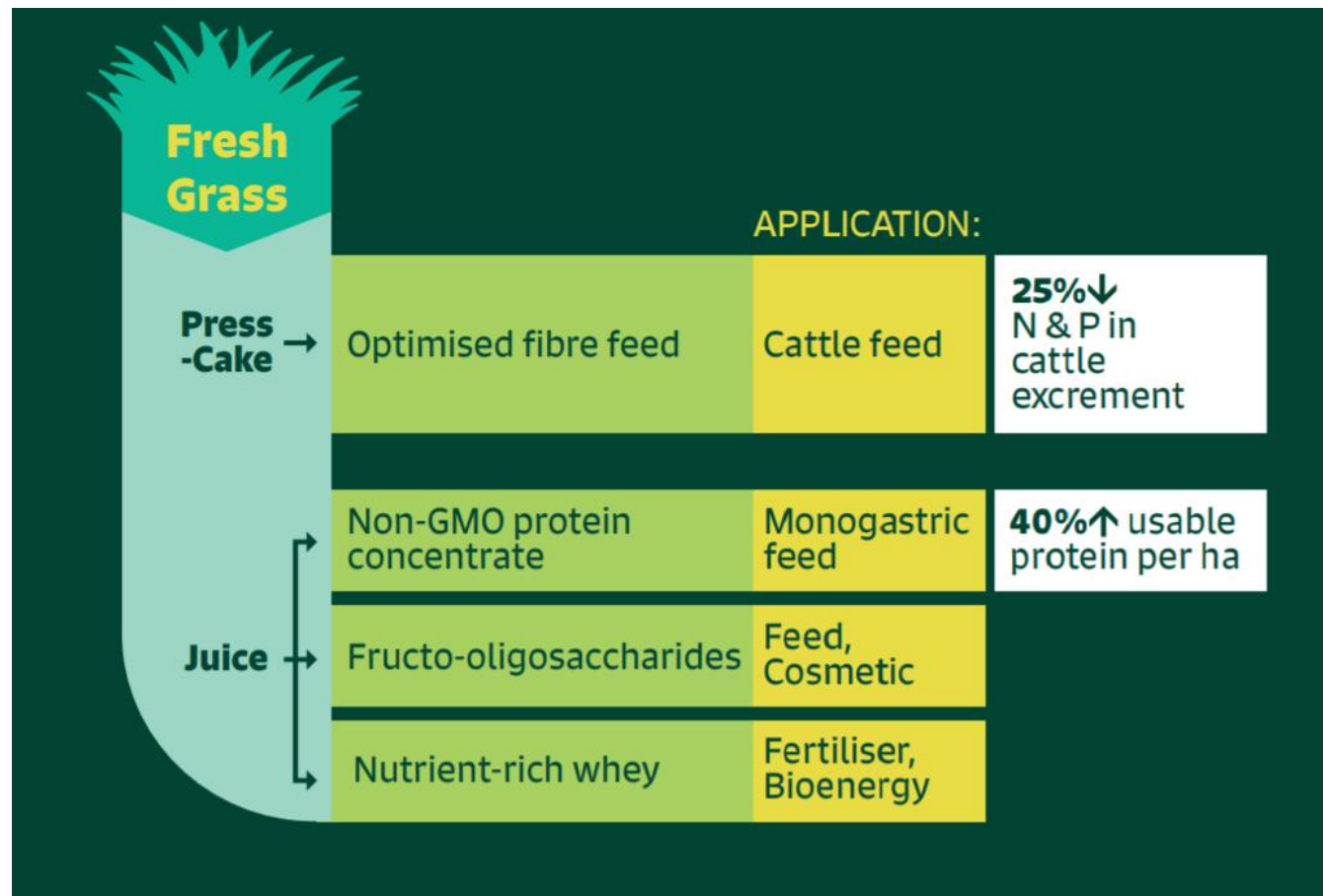
Biorefinery Glas

Small-scale, farmer-led green biorefineries



Drivers and Approach

- Reduce ruminant GHG and other emissions
- Reduce import of soybean and associated emissions
- Show how grass can be used in a more resource efficient and valuable way
- Demonstrate how bioeconomy can be directly taken up by farmers as producers of products
- Use a cascade approach to produce and evaluate products from grass



Demonstration Phase

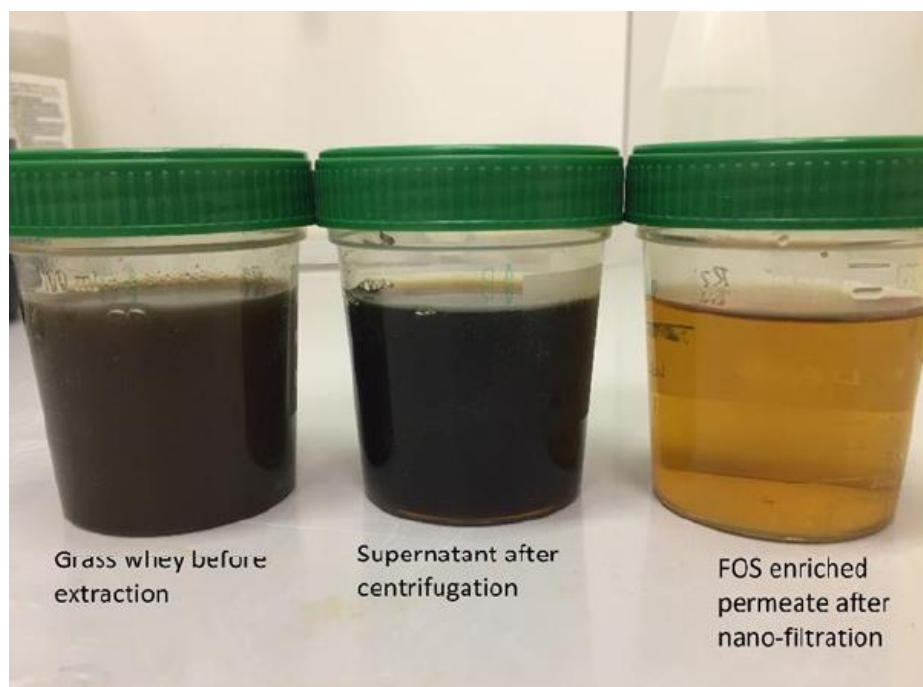


Feeding trials of green biorefinery protein products

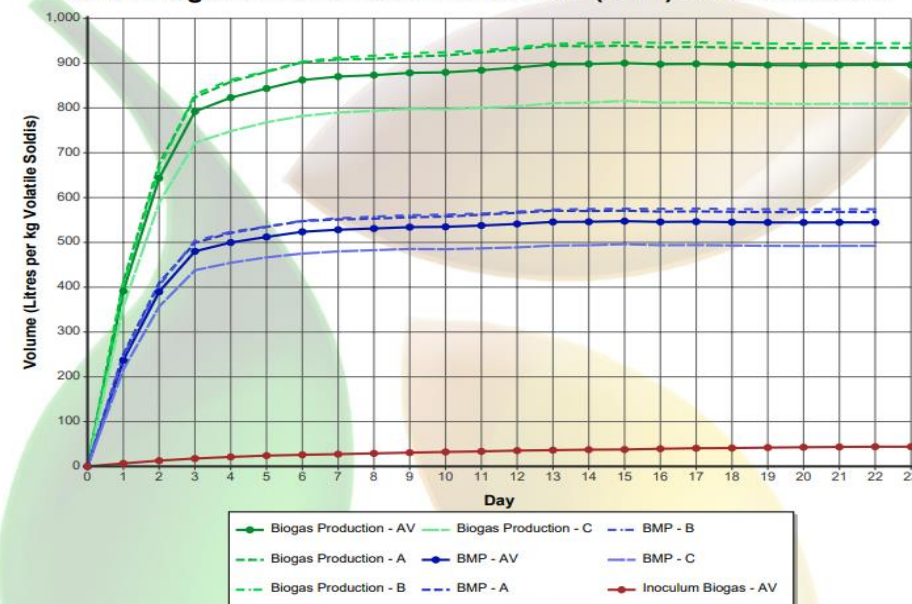
– Presscake for cows, protein concentrate for pigs



Analysis of green biorefinery co-products – prebiotic FOS, whey as biofertiliser or AD substrate



Plot of Biogas and Biomethane Potential (BMP) - Inoculum Subtracted



Other Project Activities

- Attributional Life Cycle Assessment under development comparing emissions from a number of process configurations and also against comparative products
- Economic analysis and identification of business models under development
- Survey with farmers and experts to support enabling policy recommendations
- KE activities with farmers and Digital Storytelling
- More info on www.biorefineryglas.eu



Thanks to our Team





Circular Bioeconomy Research Group

James Gaffey
Co-director, CIRCBIO
James.Gaffey@staff.ittralee.ie

